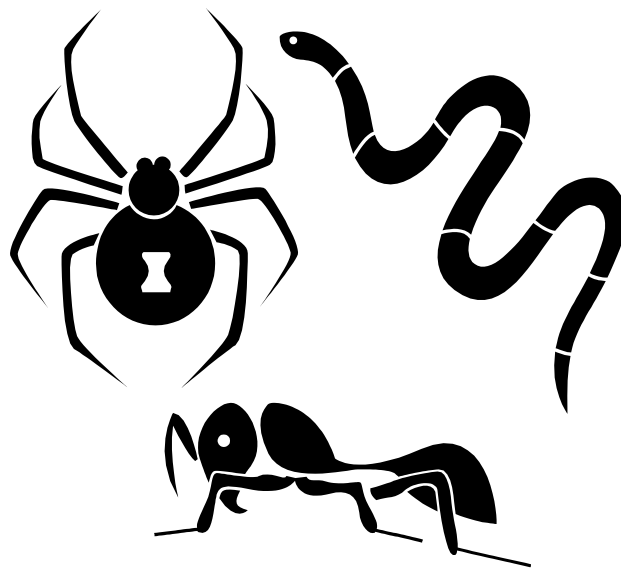


Venomous Bites and Stings



June 2006

KSC/CCAFS Health Education and Wellness Program

**Jessica Crews, BS, CHES
Kris S. Calderon, PhD, CHES**

Introduction

Living in Florida and working at the Kennedy Space Center, we are able to see many beautiful species. Unfortunately, some plants and animals can be dangerous to humans. In Florida, there are a variety of insects, snakes, and plants that can be harmful and sometimes fatal if not treated properly.

Fire Ants



Description	Black, brown, red, or multi-colored segmented bodies.
Point of Injection	Itching for days, slight redness. Fire ants leave a pimple-like bump that bursts, leaving a small bruise.
Possible Symptoms	Allergic reaction or infection.
Recommended Treatment Protocol	Cleanse. Apply wrapped ice and paste of baking soda or meat tenderizer. Apply anti-itch products such as calamine lotion. Go to hospital ER if allergic reaction occurs.

Red Velvet Ants



Description	Very large (1/2-1 inch), wingless, ant-like wasp. Covered with hair, bright red, orange, or yellow.
Point of Injection	No mark. Pain like a needle stick.
Possible Symptoms	Causes a lot of pain near point of injection. Can cause swelling. Muscle twitching/spasms, cramps, vomiting, sweating, headache, severe trunk pain
Recommended Treatment Protocol	Cleanse with soap & water. Cool compresses. Go to hospital ER for observation and treatment.

Bees and Wasps



Description	Wasps and hornets have smooth segmented bodies. Bees are fuzzy yellow and black with a stinger that may be left in the wound.
Point of Injection	No mark. Pain like a needle stick.
Possible Symptoms	Muscle twitching/spasms, cramps, vomiting, sweating, headache, severe trunk pain
Recommended Treatment Protocol	Cleanse with soap & water. Cool compresses. Go to hospital ER for observation and treatment.

Snakes

Eastern Coral Snake



Description	Like non-poisonous snakes, it has a small head and small teeth. Identify it by the red, black & yellow colors along with a black nose. (<i>"Red touches yellow, kill a fellow. Red touches to black, venom lack"</i>).
Point of Injection	Scratch marks, little or no swelling.
Possible Symptoms	(Often delayed up to 12 hrs.) Vomiting, eyelid droop, dizziness, difficulty swallowing, slurred speech, difficult breathing, and weakness leading to paralysis.
Recommended Treatment Protocol	Keep bitten extremity below heart level. NO ice, tourniquets, or incising of bite site. Cleanse with soap & water. ALL CORAL SNAKE BITE VICTIMS MUST GO TO THE HOSPITAL ER for evaluation and antivenin.

Rattlesnakes, Cottonmouths, & Copperheads



Description	Rattlesnakes, cottonmouth (moccasins), & copperheads have a large triangular head, fangs, a pit b/w eyes & nose, and elliptical pupils. Identify it by the large triangular head.
Point of Injection	Puncture wounds. 25% of bites are dry bites. If envenomated: pain, blisters, bruising, progressive swelling, oozing of blood.
Possible Symptoms	Tremors, vomiting, tingling, metallic taste in the mouth, weakness.
Recommended Treatment Protocol	Remove jewelry & tight clothing near bite. Keep limb below heart level. Cleanse. DON'T apply tourniquet or ice (these worsen damage). DON'T cut & suck out venom. Go to the hospital ER.

Spiders

Black Widow



Description	Shiny black with a red hourglass shape on abdomen. There are also dull brown & red widows with orange or red circles on abdomen.
Point of Injection	No mark. Pain like a needle stick.
Possible Symptoms	Muscle twitching/spasms, cramps, vomiting, sweating, headache, severe trunk pain
Recommended Treatment Protocol	Cleanse with soap & water. Cool compresses. Go to Hospital ER for observation and treatment.

Brown Recluse



Description	Also called Violin or Fiddleback Spider. A brown spider no larger than a quarter, with a dark brown violin shape on its back.
Point of Injection	Red rings around black blister, appears infected. Swollen & painful.
Possible Symptoms	Fever, chills, nausea and vomiting, itching, brown urine.
Recommended Treatment Protocol	Cleanse with soap & water. Go to Hospital ER or physician for tetanus booster or wound treatment if needed.

Scorpions



Description	Lobster -shaped brown or black body with a stinger on tail. Florida scorpions are NOT venomous.
Point of Injection	Pain, mild swelling.
Possible Symptoms	Allergic reaction. Poisonous scorpions from other states cause weakness & paralysis.
Recommended Treatment Protocol	Cleanse with soap & water. Apply wrapped ice.

Poisonous Plants

Plant Group [by poison type]	Plant Common Name	Location	Description and Symptoms
Oxalate	Arrowhead, Dieffenbachia, Caladium, Philodendron, Peace Lily, Pothos	These are mostly outdoor ornamental plants	Contain oxalate crystals in their stems, roots and leaves. Needlelike crystals cause immediate pain, burning and irritation in the lips, mouth and throat. Can cause slurred speech.
Cardiac Glycoside	Oleander, Lily of the Valley, Foxglove	These are mostly outdoor ornamental plants	All parts, especially oleander, are poisonous. Some skin irritation is possible through contact, most poisonings occur by eating or chewing the plant, or by breathing in smoke from burning plants. Symptoms include nausea, vomiting, stomach cramps, dizziness, low blood pressure, slow heart rate and seizures.
Toxalbumin, Ricin	Castor Beans, Rosary Pea	These are mostly outdoor ornamental plants	Ingestion, specifically when chewed or split open, can cause severe symptoms, including vomiting, diarrhea, burning/corroding the esophagus, shock, multi-organ failure (liver, kidneys, respiratory failure)
Colchicine	Glory Lily, Autumn crocus	These are mostly outdoor ornamental plants	Ingestion can cause severe symptoms, including vomiting, diarrhea, fever, shock, multi-organ failure (liver, kidneys, respiratory failure)
Triterpenoid	Common Lantana, Chinaberry	These are mostly outdoor ornamental plants	All parts can be poisonous and can cause skin irritation. However, the berries are most poisonous and, if eaten, symptoms include vomiting, diarrhea, stomach cramps, fever, seizures and shallow or difficult breathing.
Gastro-Intestinal	Croton, Poinsettia, American Holly	These are mostly outdoor ornamental plants	All parts can cause skin irritation and/or rash from milky sap inside. If eaten in quantity, symptoms include nausea and/or diarrhea.
Anti cholinergic	Angel's Trumpet	These are mostly outdoor ornamental plants	When flowers, leaves or seeds are eaten or ingested as a brewed tea, symptoms include hallucinations, dry mouth, muscle weakness, increased blood pressure and pulse, fever, dilated pupils, paralysis.
Skin Irritant	Poison Ivy, Brazilian Pepper	These are mostly outdoor wild plants	Poison Ivy, especially, causes acute symptoms in some people, including severe skin redness, itching, swelling, and blisters following direct or indirect contact. These plants are poisonous if swallowed or smoke from burning plant is inhaled.
Various	Wild Mushrooms	These are mostly outdoor wild plants	Symptoms vary by species and range from none to severe gastrointestinal distress (nausea, vomiting, diarrhea, and abdominal pain), to hallucinations, acute renal failure, and death.

Disclaimer: This packet is designed to be informational and educational. Under no circumstance is this packet meant to provide medical treatment or replace the expert advice of a qualified poison information specialist or physician.

References

Black Widow Spider. Florida Poison Information Center. Retrieved on 05 May 2006 from http://www.poisoncentertampa.org/venomouscritters/spider_blackwidow.html

Brown Recluse Spider. Florida Poison Information Center. Retrieved on 05 May 2006 from http://www.poisoncentertampa.org/venomouscritters/spider_brownrecluse.html

Common Poisonous Plants of Florida. Florida Poison Information Center. Retrieved on 15 May 2006 from <http://www.poisoncentertampa.org/informational/poisonplants.html>

Eastern Coral Snake. Florida Poison Information Center. Retrieved on 05 May 2006 from http://www.poisoncentertampa.org/venomouscritters/snake_coral.html

Fire Ants and Others. Florida Poison Information Center. Retrieved on 05 May 2006 from http://www.poisoncentertampa.org/venomouscritters/ant_fireant.html

General Bees and Wasps. Florida Poison Information Center. Retrieved on 05 May 2006 from http://www.poisoncentertampa.org/venomouscritters/beewasp_general.html

General Scorpion. Florida Poison Information Center. Retrieved on 15 May 2006 from http://www.poisoncentertampa.org/venomouscritters/scorpion_general.html

Pit Viper Snakes. Florida Poison Information Center. Retrieved on 05 May 2006 from http://www.poisoncentertampa.org/venomouscritters/snake_pitviper.html

Resources

**Poisoning Emergency or Question Call
1-800-222-1222**

Florida Poison Information Center
www.poisoncentertampa.org

Tommy Williams (KSC Pest Control)
(321) 749-9073