



RESOURCE GROUP FORM
FLORIDA MASTER SITE FILE
Version 4.0 1/07

Site #8 BR02931
Field Date 1-23-2012
Form Date 2-27-2012
Recorder#

Original
Update

NOTE: Use this form to document districts, landscapes, building complexes and linear resources as described in the box below. Cultural resources contributing to the Resource Group should also be documented individually at the Site File. Do not use this form for National Register multiple property submissions (MPSs).

Check ONE box that best describes the Resource Group:

- Historic district (NR category "district"): buildings and NR structures only. NO archaeological sites
Archaeological district (NR category "district"): archaeological sites only. NO buildings or NR structures
Mixed district (NR category "district"): includes more than one type of cultural resource (example: archaeological sites and buildings)
Building complex (NR category usually "building(s)": multiple buildings in close spatial and functional association
Designed historic landscape (NR category usually "district" or "site"): can include multiple resources (see National Register Bulletin #18, page 2 for more detailed definition and examples: e.g. parks, golf courses, campuses, resorts. etc.)
Rural historic landscape (NR category usually "district" or "site"): can include multiple resources and resources not formally designed (see National Register Bulletin #30, Guidelines for Evaluating and Documenting Rural Historic Landscapes for more detailed definition and examples: e.g. farmsteads, fish camps, lumber camps, traditional ceremonial sites, etc.)
Linear resource (NR category usually "structure"): Linear resources are a special type of rural historic landscape and can include canals, railways, roads, etc.

Resource Group Name NASA KSC Railroad Track
Project Name
National Register Category (please check one): building(s) structure district site object
Linear Resource Type (if applicable): canal railway road other (describe):
Ownership: private-profit private-nonprofit private-individual private-nonspecific city county state federal Native American foreign unknown

LOCATION & MAPPING

Address: Street Number Direction Street Name Street Type Suffix Direction
City/Town (within 3 miles) Titusville In Current City Limits? yes no unknown
County or Counties (do not abbreviate) Brevard
Name of Public Tract (e.g., park)
1) Township Range Section 1/4 section: NW SW SE NE Irregular-name:
2) Township Range Section 1/4 section: NW SW SE NE
3) Township Range Section 1/4 section: NW SW SE NE
4) Township Range Section 1/4 section: NW SW SE NE
USGS 7.5' Map(s) 1) Name USGS Date
2) Name USGS Date
Plat, Aerial, or Other Map (map's name, originating office with location) and grant
Verbal Description of Boundaries (description does not replace required map) see continuation sheet.

DHR USE ONLY

OFFICIAL EVALUATION

DHR USE ONLY

NR List Date SHPO - Appears to meet criteria for NR listing: yes no insufficient info Date Init.
KEEPER - Determined eligible: yes no Date
Owner Objection NR Criteria for Evaluation: a b c d (see National Register Bulletin 15, p. 2)

HISTORY & DESCRIPTION

Construction Year: 1963 approximately year listed or earlier year listed or later
 Architect/Designer (last name first): _____ Builder (last name first): see continuation sheet
 Total number of individual resources included in this Resource Group: # of contributing 1 # of non-contributing _____
 Time period(s) of significance (choose a period from the list or type in date range(s), e.g. 1895-1925)
 1. ca. 1963-2010 3. _____
 2. _____ 4. _____
 Narrative Description (*National Register Bulletin 16A* pp. 33-34; fit a summary into 3 lines or attach supplementary sheets if needed) see continuation sheet

RESEARCH METHODS (check all that apply)

FMSF record search (sites/surveys) library research building permits Sanborn maps
 FL State Archives/photo collection city directory occupant/owner interview plat maps
 property appraiser / tax records newspaper files neighbor interview Public Lands Survey (DEP)
 cultural resource survey historic photos interior inspection HABS/HAER record search
 other methods (specify) _____
 Bibliographic References (give FMSF Manuscript # if relevant) see continuation sheet

OPINION OF RESOURCE SIGNIFICANCE

Potentially eligible individually for National Register of Historic Places? yes no insufficient information
 Potentially eligible as contributor to a National Register district? yes no insufficient information
 Explanation of Evaluation (required, see *National Register Bulletin 16A* p. 48-49. Attach longer statement, if needed, on separate sheet.) see continuation sheet

Area(s) of Historical Significance (see *National Register Bulletin 15*, p. 8 for categories: e.g. "architecture", "ethnic heritage", "community planning & development", etc.)
 1. Other 3. _____ 5. _____
 2. Transportation 4. _____ 6. _____

DOCUMENTATION

Accessible Documentation Not Filed with the Site File - including field notes, analysis notes, photos, plans and other important documents
 1) Document type All materials at one location Maintaining organization Archaeological Consultants Inc
 Document description _____ File or accession #'s P90260
 2) Document type _____ Maintaining organization _____
 Document description _____ File or accession #'s _____

RECORDER INFORMATION

Recorder Name Trish Slovinac Affiliation Archaeological Consultants Inc
 Recorder Contact Information 8110 Blaikie Court, St A, Sarasota, FL 34240/941-379-6206/ACIFloridaAcomcast.net
 (address / phone / fax / e-mail)

Required Attachments

- ① PHOTOCOPY OF USGS 7.5' MAP WITH DISTRICT BOUNDARY CLEARLY MARKED
- ② LARGE SCALE STREET, PLAT OR PARCEL MAP WITH RESOURCES MAPPED & LABELED
- ③ TABULATION OF ALL INCLUDED RESOURCES (name, FMSF #, contributing? Y/N, resource category, street address or township-range-section if no address)
- ④ PHOTOS OF GENERAL STREETScape OR VIEWS (Optional: aerial photos, views of typical resources)
 Photos may be archival B&W prints OR digital image files. If submitting digital image files, they must be included on disk or CD AND in hard copy format (plain paper is acceptable). Digital images must be at least 1600 x 1200 pixels, 24-bit color, jpeg or tiff.

CONTINUATION SHEET**Location and Mapping***Township/Range/Section*

21S/35E/21, 23, 24
21S/36E/19, 20, 21, 22, 23, 24, 26, 27, 35, 36
21S/37E/19, 20, 21, 27, 28, 34
22S/36E/1, 12
22S/37E/2, 3, 7, 8, 18, 19, 30, 31
23S/37E/5

USGS 7.5' Maps:

False Cape, Fla. 1976, PI 1984
Mims, Fla. 1949, PR 1970
Orsino, Fla. 1976
Wilson, Fla. 1949, PR 1979

Verbal Description of Boundaries

The west boundary of the NASA Railroad is the point where it meets the Florida East Coast Line in Titusville. There are two south boundaries: one where the west branch ends within the Kennedy Space Center (KSC) Industrial Area, the other where the east branch reaches the boundary between KSC and Cape Canaveral Air Force Station (CCAFS). There is also an east boundary at the Compressor/Converter Facility, just east of the Vehicle Assembly Building (VAB) Area. The width of the resource is defined as the width of the railroad bed.

Narrative Description

The NASA Railroad at Kennedy Space Center is categorized as a standard gauge industrial short line, with an approximate total length of 38 miles. Originally, the line was constructed of 100- or 112-pound jointed rail with wood crossties and limestone ballast. Circa 1983, the NASA installed 132-pound continuous-welded rail and a combination of concrete and wood crossties, "because of the hazardous commodities hauled over the railroad, particularly the solid rocket boosters for the space shuttle" (NASA 2007). The rebuilt line maintained the footprint/path of the original track; the limestone ballast was replaced with granite in the mid-1980s (NASA KSC Archives Department 1983).

The NASA railroad begins west of the Jay Jay Yard, where the tracks form a junction with the main FEC rail line. The Jay Jay Yard is a four-track yard, reduced from the original seven-track yard ca. 1986 (NASA KSC Archives Department 1986). From Jay Jay Yard, the NASA Railroad crosses the Indian River via the Jay Jay Bridge (8BR2906), a ~0.5 mile-long, single-leaf, bascule bridge, constructed ca. 1963. The track then extends east for ~7 miles to Wilson's Corner (roughly the intersection of State Highway 402 and Kennedy Parkway North). Along the way, there are two yards, the West Wilson Yard, which consists of two tracks, and the Wilson Yard, which consists of four tracks. At Wilson's Corner, the Railroad splits into two branches. The east branch, with a length of ~9 miles, extends eastward to Playalinda Beach, and then curves southeast to parallel the Atlantic coastline. From this branch, there is a small spur (~0.2 miles) that extends to Launch Complex 39A and one (~0.2 miles) that extends to Launch Complex 39B; just northeast of Complex 39A is the East Yard, a two-track yard. The east branch of the NASA railroad ends at the boundary between KSC and CCAFS.

The west branch of the railroad, with a total length of ~11 miles, extends from Wilson's Corner extends southeast to the KSC VAB Area. Just over one-half mile from Wilson's Corner, there is a ~0.5-mile spur

CONTINUATION SHEET

west toward the Shuttle Landing Facility, which is referred to as Suspect Siding. At the north end of the VAB Area, there is a ~1.7-mile spur that extends east toward the Rotation, Processing and Surge Facility. Just prior to reaching the facility, it splits into two, with one branch going into the facility, and the second continuing past the building and on to the Compression/Converter Facility. Toward the south end of the VAB Area, the west branch curves to travel southward to the Industrial Area. Along the way, it extends through the ~0.83 mile-long, four-track Locomotive Maintenance Facility, located north of Schwartz Road. Within the Industrial Area, just south of 3rd Street, the west branch curves to the east, and passes by KSC's main supply warehouses.

Explanation of Evaluation

The NASA KSC Railroad Track has been used to carry a variety of materials and spacecraft components. Both the east and west branches have been used to transport generic GSE and construction materials to various locations on the center. The east branch was used for fuel and oxidizer shipments to CCAFS, as well as Air Force Titan rocket and Navy Trident missile deliveries. The west branch was used throughout the SSP to carry fueled SRM segments from Utah to KSC and spent SRM segments from KSC to Utah. It also supported the delivery of SRM segments for the Ares I-X flight test (Heiney 2011; *Spaceport News* 2001). As a whole, in view of its largely general support function vis a vis the U.S. Manned Space Programs, the NASA KSC Railroad Track is not considered individually eligible for listing in the NRHP. However, a roughly 19-mile portion of the track, used for the delivery of SRM segments, is considered contributing to the NRHP-eligible NASA KSC Railroad System Historic District (8BR2932).

Bibliographic References

Heiney, Anna.

2011 "NASA Railroad Played Vital Role in Shuttle Booster Haul." *Spaceport News*. 11 February:6.

NASA KSC, Archives Department

1983 Box 3, Folder No. 6670-2-1983.

1986 Box 3, Folder No. 6670-2-1986.

Spaceport News

2001 Inside KSC Railroad. 8 June:4.



PHOTOGRAPHS



Jay Jay Yard, facing west



Track over Jay Jay Bridge, facing west

ARCHAEOLOGICAL CONSULTANTS, INC.



PHOTOGRAPHS



Track between Jay Jay Yard and Wilson's Corner, facing east



Wilson Yard, facing west

ARCHAEOLOGICAL CONSULTANTS, INC.



PHOTOGRAPHS



Track extending toward Playalinda Beach, facing east

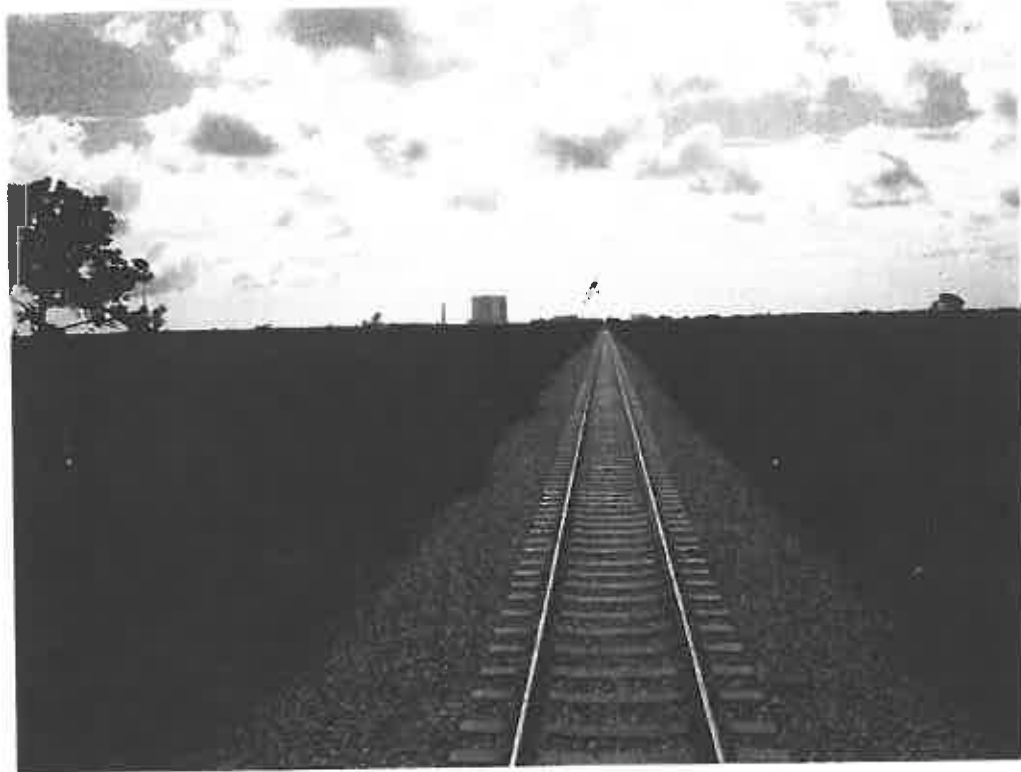


Track near Launch Complex 39, Pads A and B, facing north

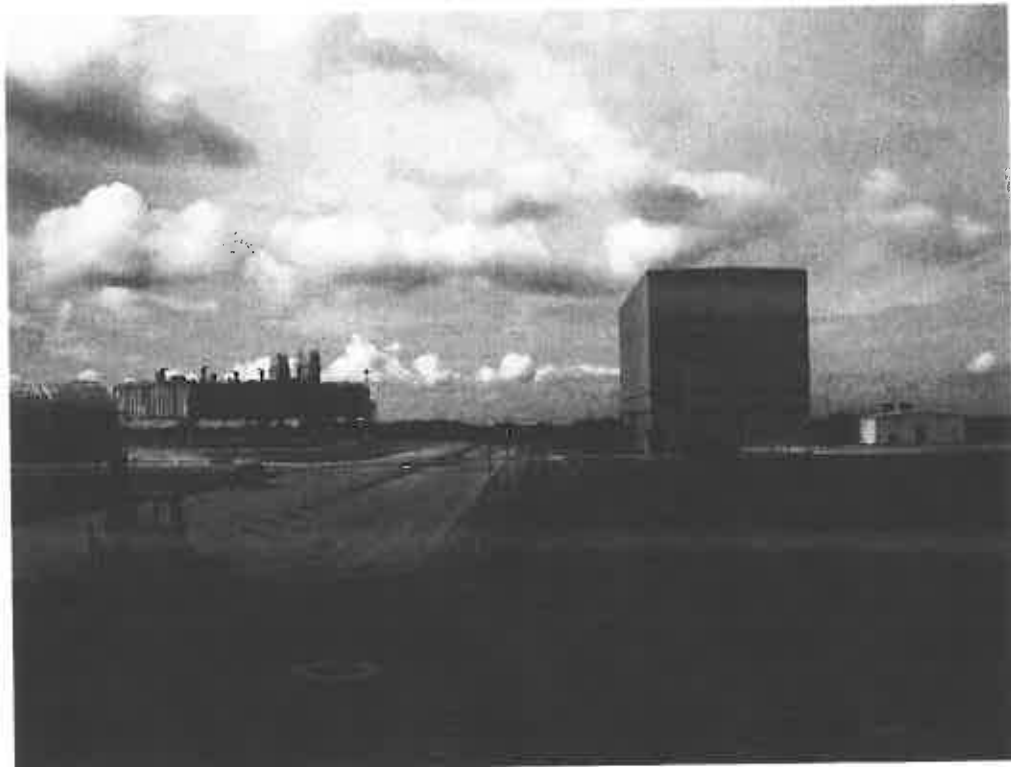
ARCHAEOLOGICAL CONSULTANTS, INC.



PHOTOGRAPHS



Track north of the Vehicle Assembly Building, facing south



Track near the Rotation, Processing and Surge Facility, facing west

ARCHAEOLOGICAL CONSULTANTS, INC.



PHOTOGRAPHS



Track near the Locomotive Maintenance Facility, facing south



Track within the KSC Industrial Area, facing northwest

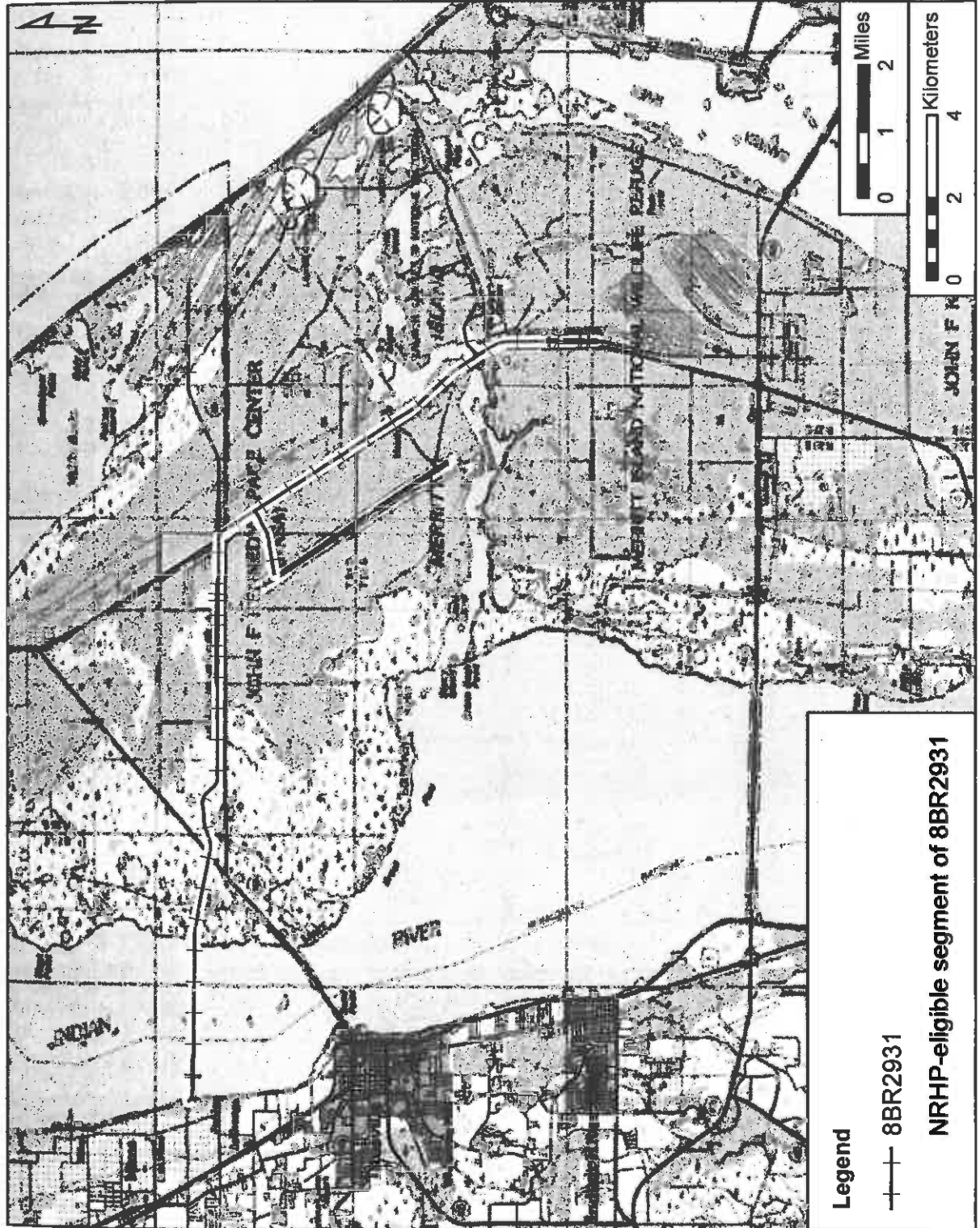
ARCHAEOLOGICAL CONSULTANTS, INC.



USGS

21S/35E/21, 23, 24
 21S/36E/19, 20, 21, 22, 23, 24, 26, 27, 35, 36
 21S/37E/19, 20, 21, 27, 28, 34
 22S/36E/1, 12
 22S/37E/2, 3, 7, 8, 18, 19, 30, 31
 23S/37E/5

False Cape, Fla. 1976, PI 1984
 Mims, Fla. 1949, PR 1970
 Orsino, Fla. 1976
 Wilson, Fla. 1949, PR 1979



National Geographic Society (2011) USA Topo Maps.

ARCHAEOLOGICAL CONSULTANTS, INC.